

Intracranial Hemorrhages



Extra-Dural Hemorrhage



Sub-Dural Hemorrhage

Study Date: 08
Study Time:



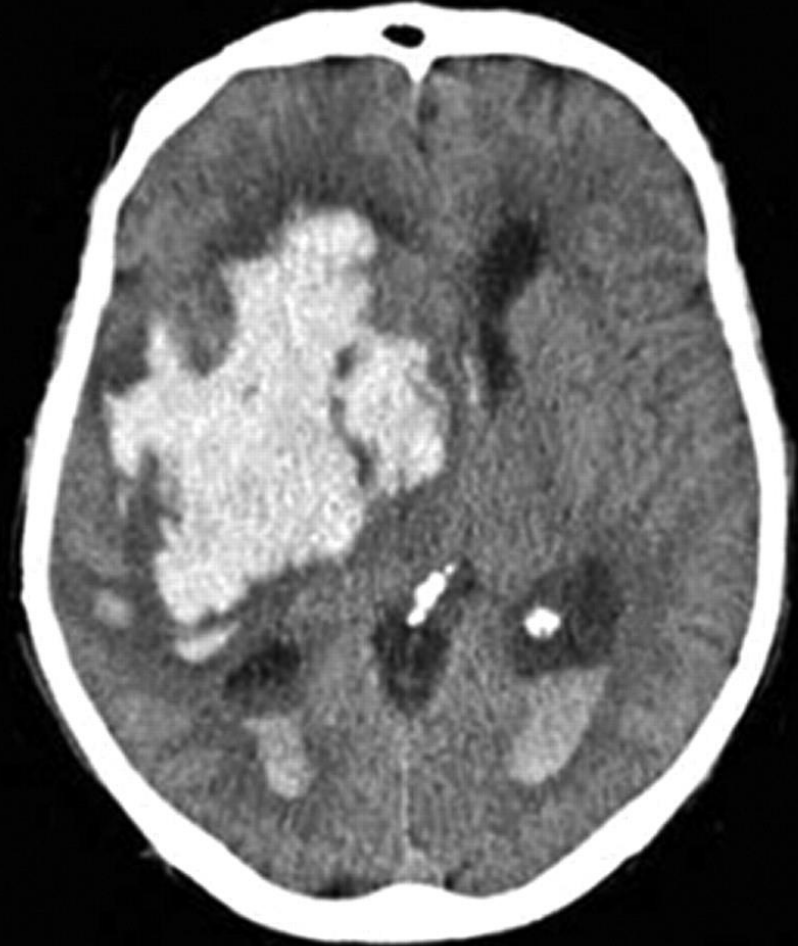
Sub-Arachnoid Hemorrhage



Intra-Cerebral Hemorrhage



2.0 hours after onset



6.5 hours after onset



RISHACADEMY

educate yourself to empower yourself

www.rishacademy.com

Intra-Ventricular Hemorrhage

